

ESP32 Deep Sleep Mode

1. About ESP32 Deep Sleep

In this project the ESP32 is idle for more than 95% of the time because it is supposed to take measurements only once an hour, transmit the data and wait again. However, the ESP32 has the possibility to be run in different power modes. Besides the active mode where all peripherals are powered, there are also the modem-sleep mode, light-sleep mode, deep-sleep mode, hibernation mode and power-off mode.

As explained in the [DS3231](#) page, the ESP32 can be put to sleep to save a lot of energy from the battery and only wake up once an hour by an interrupt signal from the DS3231 RTC module. For the ESP32 to wake up from an external interrupt, the real time clock (RTC) peripherals (RTC timer + RTC memory) must remain powered on. The power mode with the lowest energy consumption and RTC peripherals still powered on is the deep sleep mode with only RTC timer and RTC memory powered. In this mode, the module draws only 10 μA of current, which is a several thousand times less than in the active mode (see the [ESP32 datasheet](#) pp 23 -24). However, like this it is only possible to use the RTC_GPIO pins (figure 1), not the other GPIOs to read the interrupt signal.

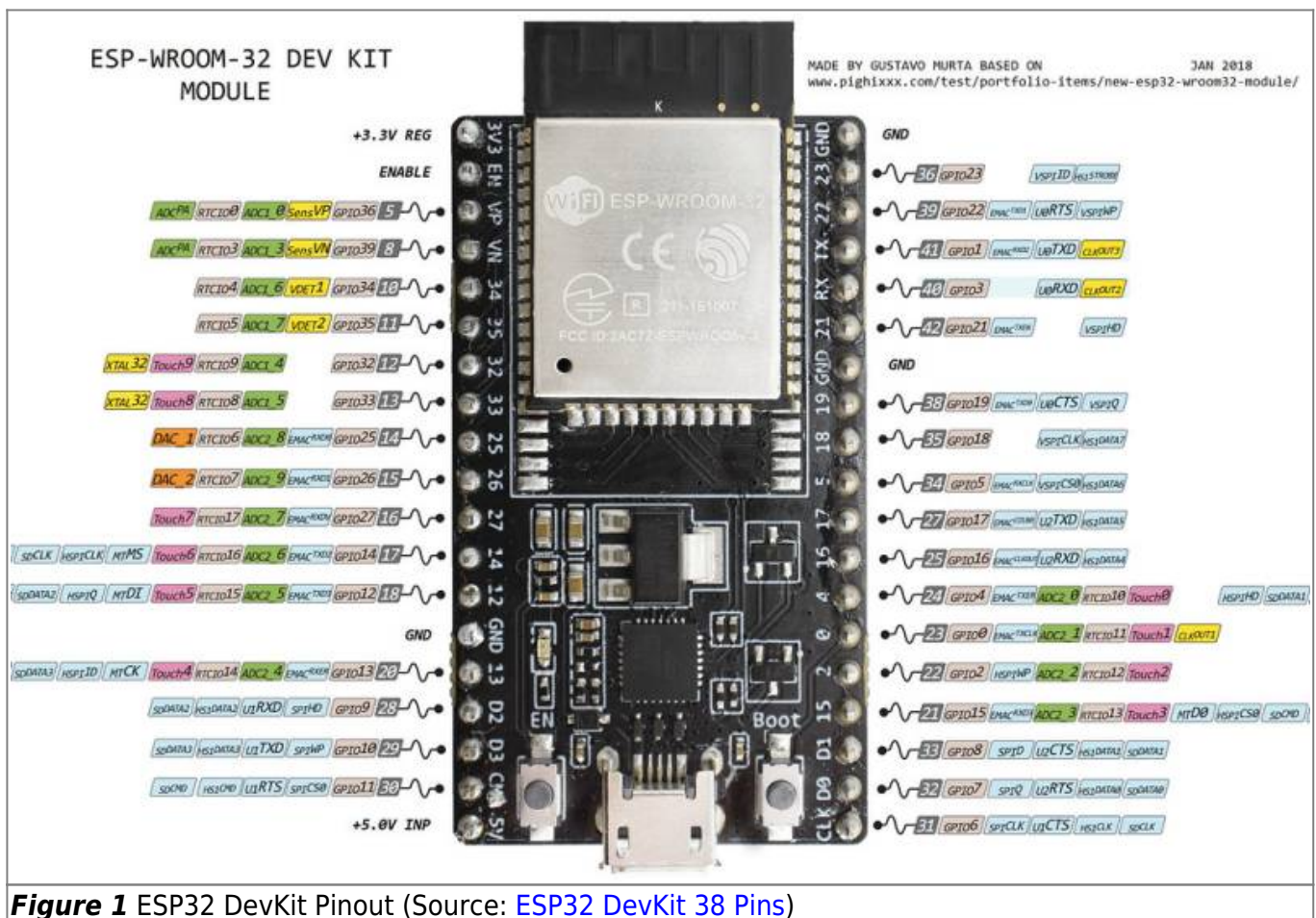


Figure 1 ESP32 DevKit Pinout (Source: [ESP32 DevKit 38 Pins](#))

2. Setup of the DS3231 with the ESP32

As the DS3231 is an open drain device, the SQW pin connected to one of the RTC_GPIO pins needs to

be pulled to high voltage using a pullup resistor. In the case of the Arduino UNO sketch, the Arduino's internal pullup resistor was used. The ESP32 also has internal pullup resistors, but their value strongly fluctuates from module to module and pin to pin and generally lies between 30 - 80 k Ω . Furthermore, it is somewhat complicated to control the pins during deep sleep mode to activate the pullups. Therefore, a 100k Ω external pullup resistor was used to connect the interrupt pin to 3.3V which also results in a lower current being drawn when the interrupt is triggered.

The DS3231 was connected the following way:

- VCC to 3.3 V
- GND to GND
- SDA to GPIO 21
- SCL to GPIO 22
- SQW to GPIO 13 (RTC_GPIO14) (and 3.3V through the pullup resistor).

The connections can also be seen in the diagram in figure 2.

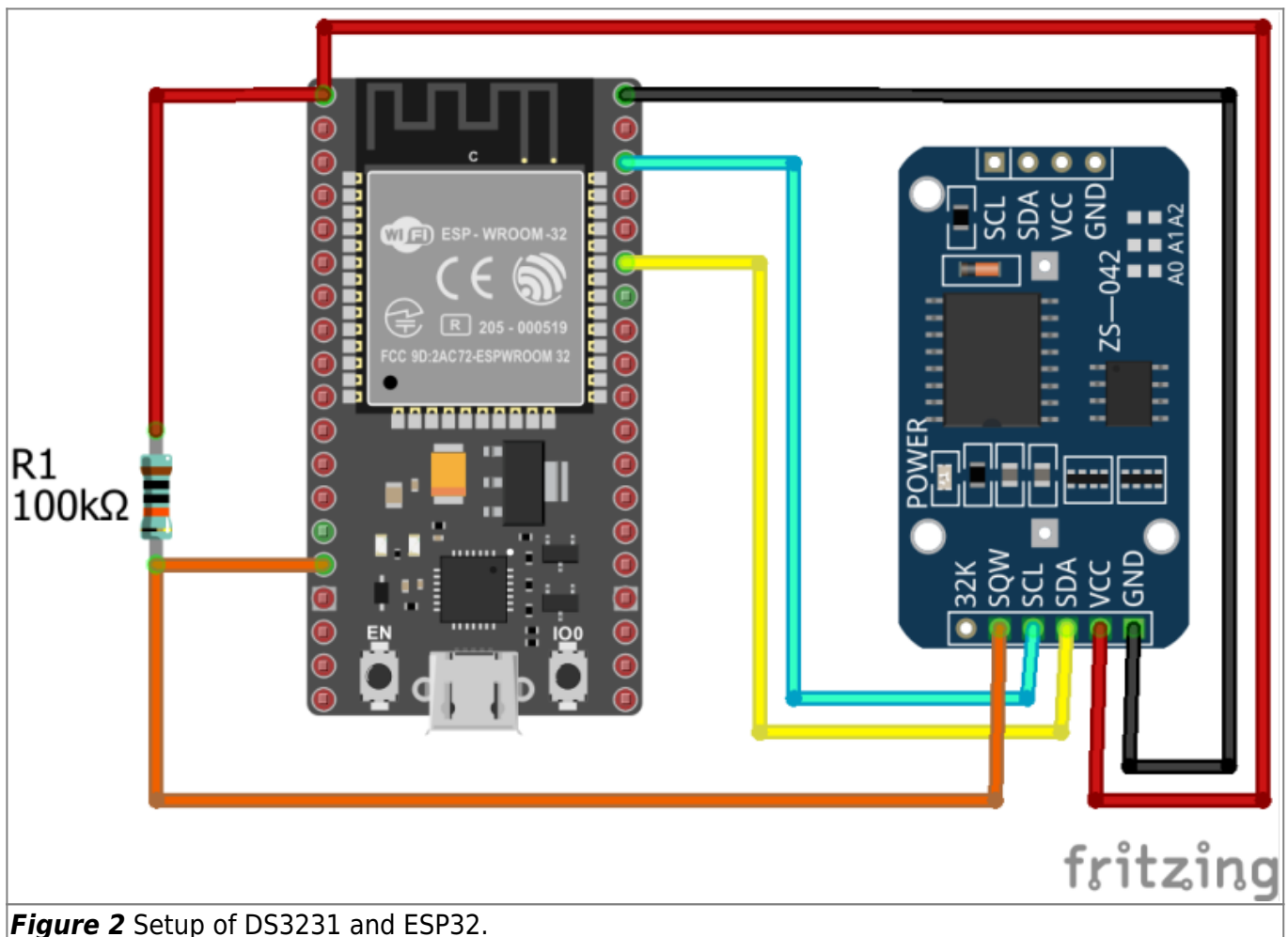


Figure 2 Setup of DS3231 and ESP32.

3. Programming

After setting up the module with the ESP32, the programming for the deep sleep is very simple. For the following test, the DS3231 was programmed to trigger an interrupt once a minute, i.e. the setting was changed to **ALARM_SECONDS_MATCH**. How to do that is explained in the [DS3231](#) page.

3.1 Code

ESP32_DS3231_Deep_Sleep_test.ino

```
//ESP32 DS3231 Deep Sleep Test

#include <Wire.h>
#define DS3231RTC_I2C_ADDRESS 0x68
#define I2C_SDA 21 //1
#define I2C_SCL 22

void clearAlarm1() { //2
    Wire.beginTransmission(DS3231RTC_I2C_ADDRESS);
    Wire.write(0x0F);
    Wire.write(B00000000);
    Wire.endTransmission();
}

void setup() {
    Wire.begin(I2C_SDA, I2C_SCL); //3
    clearAlarm1(); //4
    Serial.begin(115200); //5
    delay(1000);
    Serial.println("ESP32 woke up from deep sleep.");
    for(int i=3;i>=0;i--){
        Serial.print("Going back to sleep in ");
        Serial.println(i);
        delay(1000);
    }
    esp_sleep_enable_ext0_wakeup(GPIO_NUM_13,0); //6
    esp_deep_sleep_start(); //7
    Serial.println("This will never be printed."); //8
}

void loop() {
    //This is not going to be called.
}
```

3.2 The Code Explained

1. After including the **Wire.h** library for I2C communication and defining the DS3231 I2C address as **0x68**, the I2C pins of the ESP32 need to be defined. By default SCL is GPIO 22 and SDA is GPIO 21, but it is possible to use almost all pins for I2C communication if done correctly. Here just the default pins are used.
2. The function **clearAlarm1()** is the only one, that must also be copied into the new sketch.
3. When using the **Wire.begin()** method to start the I2C bus, the I2C pins previously defined

need to be given as argument.

4. After waking up, the alarm flag 1 of the DS3231's status register needs to be reset, otherwise the interrupt is fired continuously and the ESP32 would immediately wake up again after going into sleep mode. Therefore, **clearAlarm1()** is used to reset the alarm in the beginning.
5. The serial connection is started to test whether the sketch is working. After waking up, the ESP32 prints some data to the monitor. Then a counter is counting down from 3 to 0 and the ESP32 goes back into deep sleep.
6. The function **esp_sleep_enable_ext0_wakeup()** defines the method for waking the ESP32 up from deep sleep. The **ext0** means that the wake up source is external and can only be triggered by a single pin. The number of the pin is given in the argument as **GPIO_NUM_X** where X represents the GPIO number of that pin. The second argument (level) defines which state the pin needs to be in to wake the ESP32 up. A **1** means that it will wake up, when the voltage is 3.3V. A **0** means it wakes up when it is 0V. As the DS3231 pulls the pin to GND when the alarm is activated, the level needs to be **0**.
7. The function **esp_deep_sleep_start()** changes the power mode of the ESP32 to deep sleep.
8. When the deep sleep is activated, the rest of the program code is just not executed. After resetting, the ESP32 starts again with the **setup()**. Therefore, this line should never be printed to the serial monitor; otherwise there is an error. The program also never reaches the main **loop()**.

From:
<https://student-wiki.eolab.de/> - HSRW EOLab Students Wiki

Permanent link:
https://student-wiki.eolab.de/doku.php?id=amc2020:group_n:deepsleep&rev=1595865172

Last update: 2023/01/05 14:38

