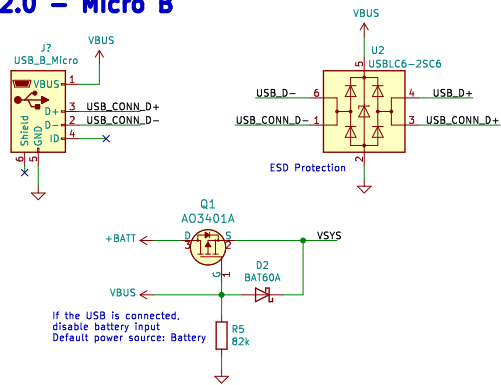
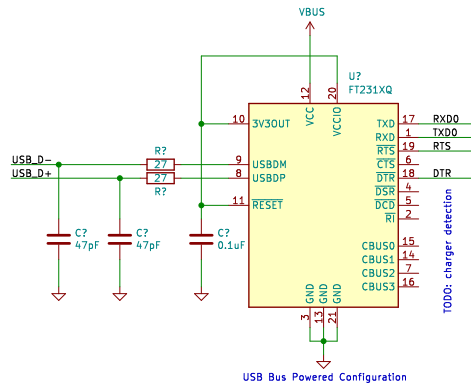


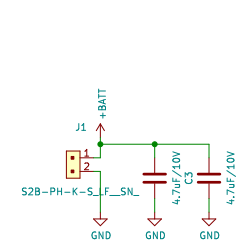
USB 2.0 – Micro B



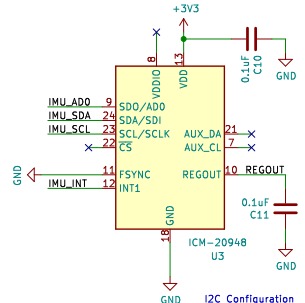
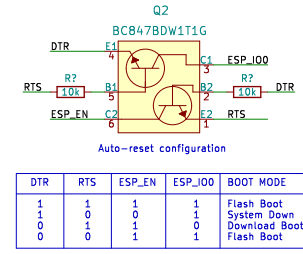
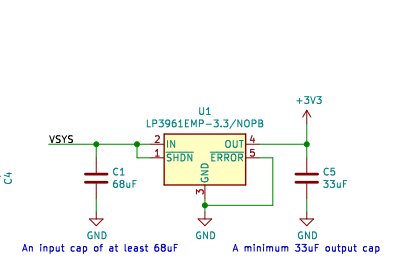
USB to UART bridge



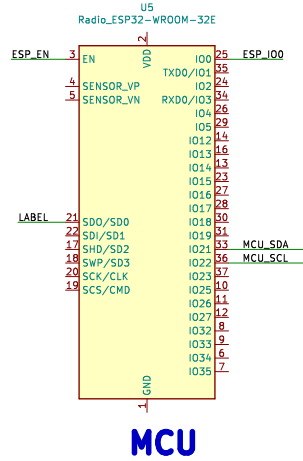
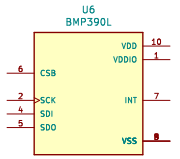
Battery Input



Regulator

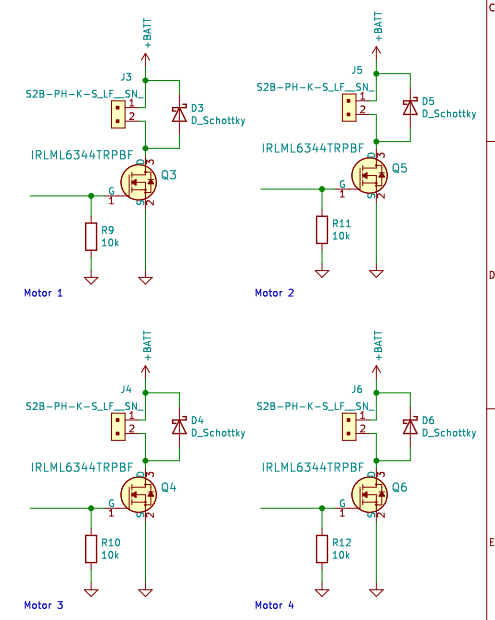


9axis IMU

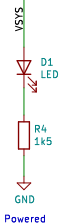


MCU

Motors Output



TODO:
 - {x}IMU
 - Barometer???



VBUS 5.5-4.5V from USB (not regulated)
 +BATT 4.2-3.6V from Battery (not regulated)
 VSYS power from battery/USB (not regulated)
 +3.3V 3.3V from Voltage regulator (regulated)